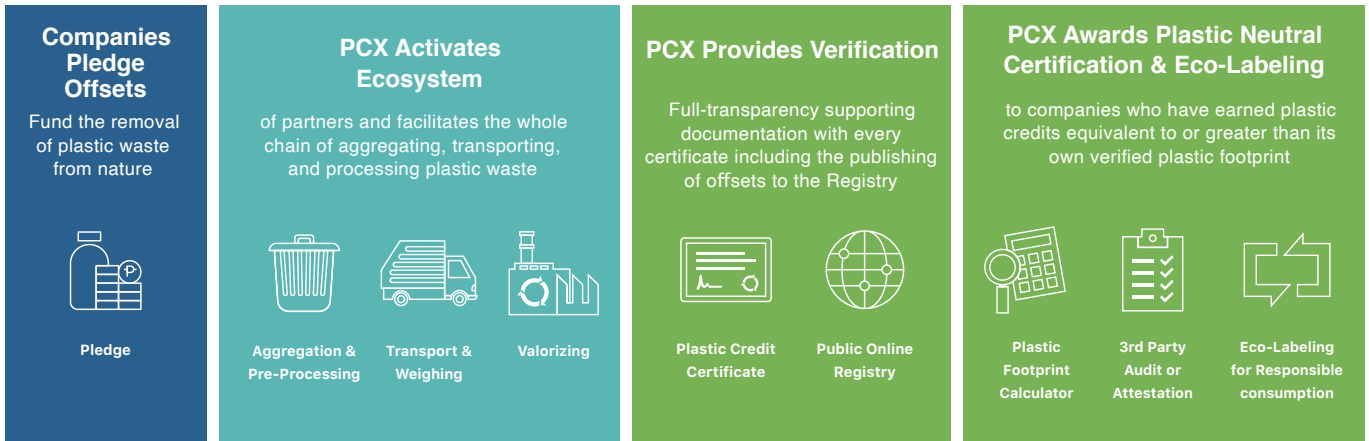




*Our integrated platform is an end-to-end solution for achieving plastic neutrality and scaling environmental and social impact.*

## How Plastic Credit Exchange Works: An End-to-End Solution



## Our Impact

 <p><b>18,016,030 kg</b></p> <p>Plastic Waste diverted from Oceans as of May 2021</p>	 <p><b>30,087 tonnes</b></p> <p>Estimated Carbon Reduction From Coal Replacement (*1.67)</p>
 <p><b>USD1,654,533</b></p> <p>Estimated Incremental Income to Community</p>	 <p><b>600,534 people</b></p> <p>Estimated Community Reach .075 kg/ person /day</p>

## Join the Growing Movement

